



Catalysis of imido group hydrolysis in a maleimide conjugate

Jeet Kalia^a and Ronald T. Raines^{a,b,*}^aDepartment of Biochemistry, University of Wisconsin-Madison, 433 Babcock Drive, Madison, WI 53706, USA^bDepartment of Chemistry, University of Wisconsin-Madison, 1101 University Avenue, Madison, WI 53706, USA

Received 24 July 2007; revised 30 August 2007; accepted 4 September 2007

Available online 7 September 2007

Abstract—Maleimides are often used for biomolecular conjugation with thiols. An underappreciated aspect of the imido group in a maleimide conjugate is its susceptibility to spontaneous hydrolysis, resulting in undesirable heterogeneity. Here, a chromophoric maleimide is used to demonstrate that both molybdate and chromate catalyze the hydrolysis of an imido group near neutral pH. Tungstate and 4-(dimethylamino)pyridine are less effective as catalysts. This work reveals a new mode of chemical reactivity for molybdate and chromate, and provides a strategy for decreasing the heterogeneity of bioconjugates derived from maleimides. © 2007 Elsevier Ltd. All rights reserved.

Chemoselective bioconjugation has revolutionized functional genomics, proteomics, and glycomics.¹ Reactions, such as the Staudinger ligation,² the Huisgen 1,3-dipolar cycloaddition,³ carbonyl group condensation reactions,⁴ and maleimide conjugation,⁵ enable the site-specific labeling of biomolecules, and their uniform immobilization to generate microarrays.

Bioconjugation via maleimides is especially common. This reaction involves the Michael addition of a biomolecular thiolate, often from the side chain of a cysteine residue, to a maleimide to form a succinimidyl thioether.^{6,7} The reaction proceeds rapidly and in high yield in neutral aqueous solutions at room temperature, making it ideal for biological applications.

An underappreciated aspect of maleimides and succinimides is the tendency of their imido groups to undergo spontaneous hydrolysis.^{8,9} As water can attack either of the two carbons of the imido group, hydrolysis of a succinimidyl thioether produces isomeric succinamic acid thioethers. Accordingly, a thiol-conjugated maleimide actually consists of a mixture of many species, some having an additional carboxylic acid that can ionize near neutral pH. As hydrolysis proceeds over time, the concentrations of these species change, introducing yet another complexity.

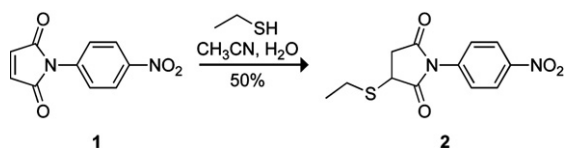
The heterogeneity of succinimidyl thioethers can alter the activity of bioconjugates and convolute the interpretation of experimental data. For example, an *N*-(1-pyrene)maleimide conjugate of α,α -tropomyosin was observed to hydrolyze in aqueous solution, causing a time-dependent increase in fluorescence.¹⁰ The cellular internalization of some peptides and proteins relies on their cationic charge,¹¹ and the presence of a hydrolyzed succinimidyl thioether could complicate data analysis by reducing that charge. Surface-based assays can be especially sensitive to heterogeneity within the immobilized species. For example, the orientation of liquid crystals near a surface is likely to be highly sensitive to non-uniformity.¹² Heterogeneity can also affect data analysis in experiments that are independent of molecular charge. For example, assays based on mass spectrometry can be confounded by the additional 18 amu introduced upon hydrolysis of a succinimidyl thioether.¹³

We reasoned that the heterogeneity of succinimidyl thioethers could be reduced by intentionally *increasing* their rate of hydrolysis. The hydrolysis of maleimides and succinimides and its catalysis have been studied previously. In 1955, Gregory reported that the rate constant for maleimide hydrolysis is considerably less than that for its reaction with a thiol.⁷ Subsequently, the hydrolysis of both maleimides and succinimides was found to be catalyzed by base.¹⁴ In general, however, bioconjugates are not stable at elevated pH.

Here, we report on catalysts of imido group hydrolysis that are effective near neutral pH. As a model system that enables facile quantitation of the rate of imido

Keywords: Bioconjugation; Catalysis; Chromate; Hydrolysis; Imido group; Maleimide; Molybdate; Oxometalate; Succinimide.

* Corresponding author. Tel.: +1 608 262 8588; fax: +1 608 262 3453; e-mail: raines@biochem.wisc.edu



Scheme 1. Route for the synthesis of succinimide **2**.

group hydrolysis, we chose a maleimide that is activated for hydrolysis and that undergoes a spectral change upon hydrolysis: *N*-(*p*-nitrophenyl)maleimide (**1**). We synthesized a model succinimidyl thioether by reacting maleimide **1** with ethanethiol to give succinimide **2**, as shown in **Scheme 1**.¹⁵ This conjugate has an absorbance maximum at 271 nm before hydrolysis that shifts to 319 nm after hydrolysis, enabling a continuous spectrophotometric assay of hydrolysis.

The molybdate anion is known to act as a nucleophilic catalyst for the hydrolysis of oxoesters,^{16,17} thioesters,¹⁶ phosphoesters,¹⁸ 2,4-dinitrofluorobenzene,¹⁷ and methyl iodide.¹⁷ The nucleophilicity of molybdate is remarkable, given its low basicity ($\text{p}K_{\text{a}} 4.1$).¹⁹ To determine if molybdate could also act as a catalyst of imido group hydrolysis, we incubated succinimide **2** with varying concentrations of Na_2MoO_4 in 0.50 M HEPES–NaOH buffer at pH 7.5, containing NaCl (0.10 M).²⁰ The resulting kinetic traces were indicative of substantial catalysis (**Fig. 1a**). Similar kinetic traces were obtained with maleimide **1**. First-order rate constants were derived from exponential fits of the kinetic traces obtained with different concentrations of molybdate, and were

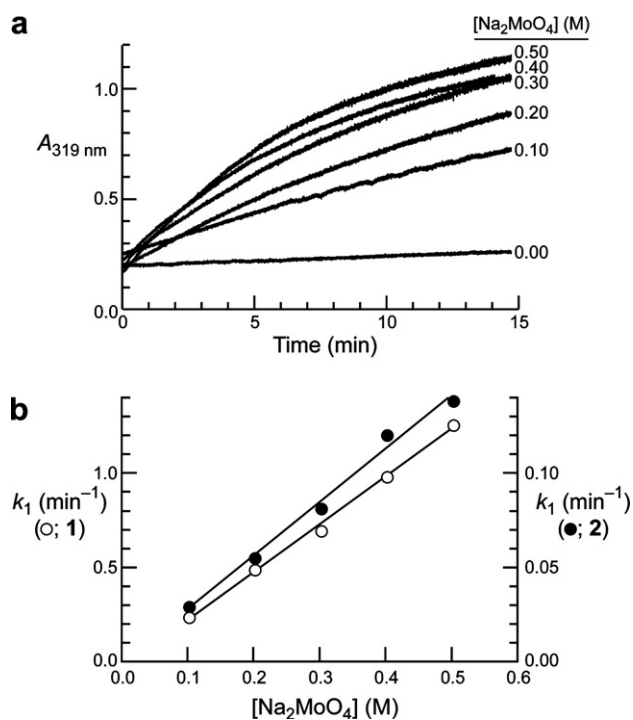


Figure 1. Molybdate-catalyzed hydrolysis of imido groups. (a) Raw data for catalysis of the hydrolysis of succinimide **2**. (b) Transformed data for the hydrolysis of maleimide **1** ($k_2 = 2.5 \text{ M}^{-1} \text{ min}^{-1}$) and succinimide **2** ($k_2 = 0.28 \text{ M}^{-1} \text{ min}^{-1}$).

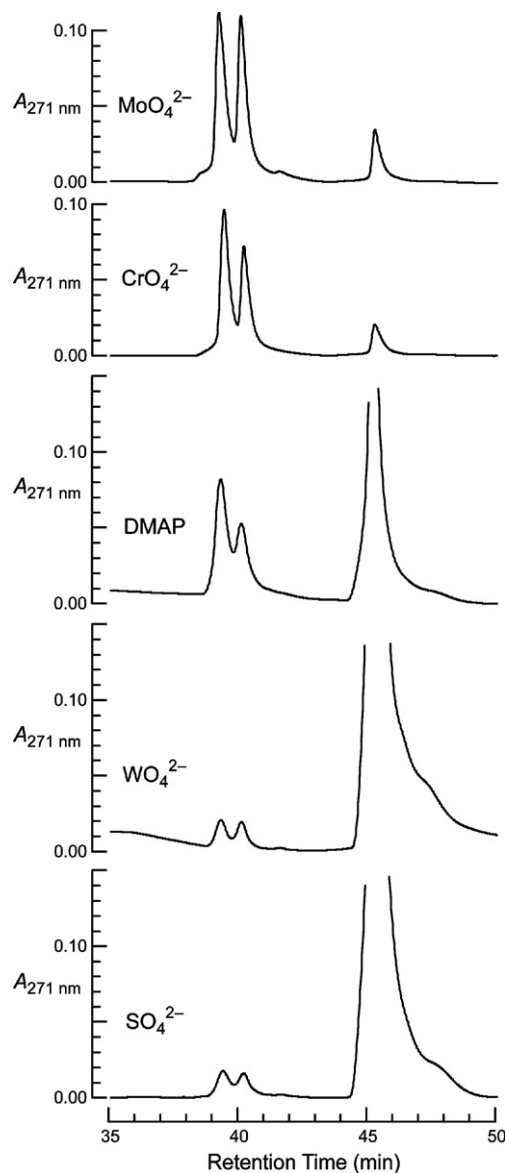


Figure 2. HPLC analysis of succinimide **2** after incubation for 2 h at room temperature with a putative catalyst (0.10 M) of hydrolysis. The twin peaks at ~ 40 min correspond to the hydrolysis products; the peak at ~ 45 min corresponds to intact succinimide **2**.

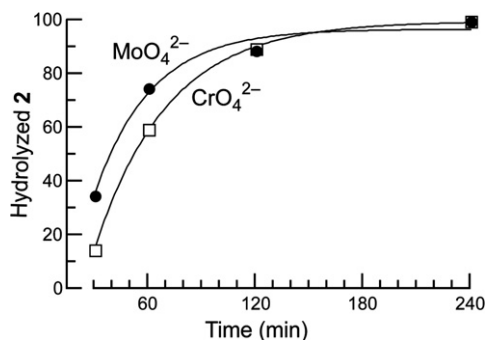
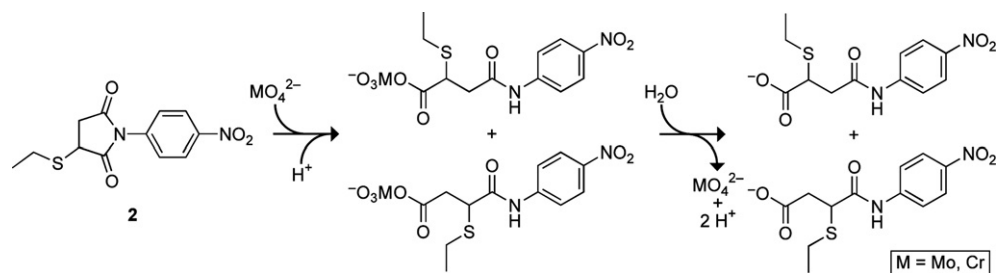


Figure 3. Comparison of molybdate and chromate as catalysts for the hydrolysis of succinimide **2**. Assays were performed by HPLC, as shown in **Figure 2**. Data were fitted to the equation: $[\text{hydrolyzed } \mathbf{2}]_t = [\text{hydrolyzed } \mathbf{2}]_{t=\infty}(1 - e^{-kt})$, where k is the apparent first-order rate constant.



Scheme 2. Putative mechanism for the molybdate- and chromate-catalyzed hydrolysis of succinimide **2**.

plotted versus the molybdate concentration (Fig. 1b). The ensuing second-order rate constant for the hydrolysis of maleimide **1** ($k_2 = 2.5 \text{ M}^{-1} \text{ min}^{-1}$) was 9-fold greater than that for succinimide **2** ($k_2 = 0.28 \text{ M}^{-1} \text{ min}^{-1}$).

Kinetic analyses were also performed with other group VI oxometalates, namely, those of chromium and tungsten. Chromate has a high absorbance at 271 and 319 nm, obviating the use of the spectrophotometric assay. To circumvent this obstacle, an HPLC-based assay was developed to monitor catalysis by chromate.²¹ An aqueous solution of succinimide **2** was incubated with Na_2CrO_4 (0.10 M) for 2 h. The reaction mixture was quenched by extraction, and analyzed by using analytical HPLC and monitoring at 271 nm. Unhydrolyzed succinimide **2** elutes at ~ 45 min (Fig. 2); hydrolyzed succinimide **2** elutes in two closely spaced peaks at ~ 40 min and was characterized by performing hydrolysis on a larger scale and isolating the hydrolysis products by semi-preparative HPLC.²² A solution of Na_2SO_4 (0.10 M) was used to report on the uncatalyzed rate of hydrolysis. The data indicated that chromate is a comparable catalyst to molybdate, whereas tungstate is a poor catalyst (Fig. 2).

4-(Dimethylamino)pyridine (DMAP), a common catalyst for acylation reactions,²³ accelerated the hydrolysis to a significantly lesser extent than molybdate or chromate (Fig. 2). To compare catalysis by molybdate and chromate directly, succinimide **2** was incubated with molybdate or chromate (0.10 M) for different time periods, and its hydrolysis was quantitated by peak integration of HPLC traces. The results indicate that the apparent first-order rate constant in the presence of molybdate was 1.3-fold higher than that in the presence of chromate (Fig. 3).

The mechanism of molybdate-catalyzed ester hydrolysis has been proposed to proceed via the nucleophilic attack of a molybdate oxygen on the ester carbon, followed by the spontaneous hydrolysis of the resulting acid molybdate intermediate.^{16,17} An analogous mechanism for the molybdate- and chromate-catalyzed hydrolysis of an imido group is shown in Scheme 2. Why are these two group VI oxometalates effective catalysts? To search for a correlation between reactivity and basicity, Um and coworkers subjected the reaction of *p*-nitrophenylacetate with group VI oxometalates to a Brønsted analysis.¹⁸ Although tungstate conformed to the expected

trend, molybdate and chromate showed significant positive deviations. The anomalous nucleophilicity of molybdate has been attributed to its poor solvation.¹⁶ In addition, the high reactivity of molybdate with oxoesters and thioesters has been attributed to Lewis acid catalysis via formation of a transient Mo–O bond with the non-bridging ester oxygen in a tetrahedral intermediate.^{16,17}

In conclusion, we have discovered that molybdate and chromate catalyze the hydrolysis of the imido group of maleimide conjugates. This discovery adds to the unexpected nucleophilic reactivity of molybdate and chromate, and provides a potential strategy for hydrolyzing the unactivated succinimidyl thioethers found in bioconjugation reactions.¹ These catalysts contain but five atoms, and are readily separable from bioconjugates by size-exclusion chromatography, gel-filtration chromatography, or dialysis. Although chromate reacts with thiols to form chromium(VI) thioesters,²⁴ maleimide conjugates would presumably be devoid of thiol groups. Finally, we anticipate that our work will increase awareness of the heterogeneity of maleimide conjugates and inspire means to diminish that heterogeneity.

Acknowledgments

We are grateful to Dr. L.E. Strong for contributive discussions. This work was supported by Grant GM44783 (NIH) and the Materials Research Science and Engineering Center at the University of Wisconsin-Madison (NSF DMR-0520527).

References and notes

- (a) *Bioconjugation: Protein Coupling Techniques for the Biomedical Sciences*; Aslam, M., Dent, A., Eds.; Macmillan Reference Ltd: London, 1998; (b) Lundblad, R. L. *Chemical Reagents for Protein Modification*, 3rd ed.; CRC Press: Boca Raton, FL, 2005; (c) Prescher, J. A.; Bertozzi, C. R. *Nat. Chem. Biol.* **2005**, *1*, 13.
- (a) Köhn, M.; Breinbauer, R. *Angew. Chem., Int. Ed.* **2004**, *43*, 3106; (b) Nilsson, B. L.; Soellner, M. B.; Raines, R. T. *Annu. Rev. Biophys. Biomol. Struct.* **2005**, *34*, 91; (c) Kalia, J.; Abbott, N. L.; Raines, R. T. *Bioconjugate Chem.* **2007**, *18*, 1064.
- (a) Huisgen, R. *Angew. Chem., Int. Ed. Engl.* **1963**, *2*, 565; (b) Kolb, H. C.; Sharpless, K. B. *Drug Discovery Today*

- 2003, 15, 1128; (c) Kalia, J.; Raines, R. T. *ChemBiochem* **2006**, 7, 1375.
4. (a) Shao, J.; Tam, J. P. *J. Am. Chem. Soc.* **1995**, 117, 3893; (b) Grandjean, C.; Rommens, C.; Gras-Masse, H.; Melnyk, O. *Angew. Chem., Int. Ed.* **2000**, 39, 1068; (c) Zatsepin, T. S.; Stetsenko, D. A.; Gait, M. J.; Oretskaya, T. S. *Bioconjugate Chem.* **2005**, 16, 471; (d) Tully, S. E.; Rawat, M.; Hsieh-Wilson, L. C. *J. Am. Chem. Soc.* **2006**, 128, 7740.
5. (a) Houseman, B. T.; Gawalt, E. S.; Mrksich, M. *Langmuir* **2002**, 19, 1522; (b) Lavis, L. D.; Chao, T. Y.; Raines, R. T. *ACS Chem. Biol.* **2006**, 1, 252; (c) Watzke, A.; Gutierrez-Rodriguez, M.; Kohn, M.; Wacker, R.; Schroeder, H.; Breinbauer, R.; Kuhlmann, J.; Alexandrov, K.; Niemeyer, C. M.; Goody, R. S.; Waldmann, H. *Bioorg. Med. Chem.* **2006**, 14, 6288; (d) Slavica, A.; Dib, I.; Nidetzky, B. *Biotechnol. Bioeng.* **2007**, 96, 9.
6. (a) Friedmann, E. *Biochim. Biophys. Acta* **1952**, 9, 65; (b) Bednar, R. A. *Biochemistry* **1990**, 29, 3684.
7. Gregory, J. D. *J. Am. Chem. Soc.* **1955**, 77, 3922.
8. Nektar Therapeutics AL, Corp., World Patent WO 2004/06095 (2004).
9. Succinimides that form in polypeptide chains by the cyclization of asparagine residues are known to undergo spontaneous hydrolysis to form isoaspartate residues. For a review, see: Clark, S. *Ageing Res. Rev.* **2003**, 2, 263.
10. Ishii, Y.; Lehrer, S. S. *Biophys. J.* **1986**, 50, 75.
11. (a) Fuchs, S. M.; Raines, R. T. *Cell. Mol. Life Sci.* **2006**, 63, 1819; (b) Johnson, R. J.; Chao, T.-Y.; Lavis, L. D.; Raines, R. T. *Biochemistry* **2007**, 46, 10308.
12. Luk, Y.-Y.; Tingey, M. L.; Dickson, K. A.; Raines, R. T.; Abbott, N. L. *J. Am. Chem. Soc.* **2004**, 126, 9024.
13. Rutkoski, T. J.; Raines, R. T. unpublished results; Underbakke, E. S.; Kiessling, L. L. personal communication.
14. (a) Niyaz Khan, N.; Aziz Khan, A. *J. Org. Chem.* **1975**, 140, 1793; (b) Matsui, S.; Aida, H. *J. Chem. Soc. Perkin II* **1978**, 1277.
15. *N*-(*p*-Nitrophenyl)maleimide (2.0 g, 9.2 mmol) was dissolved in acetonitrile (100 mL) and water (20 mL). Ethanethiol (5.5 mL, 74 mmol) was added, and the resulting solution was stirred for 2.5 h. Solvent and unreacted ethanethiol were removed under reduced pressure, and the residue was purified by flash chromatography (silica gel, 60% v/v hexanes in ethyl acetate) to give the desired product as an off-white solid (1.29 g, 50%). ^1H NMR (400 MHz, CD_3CN) δ = 8.35 (d, J = 9.2 Hz, 2H), 7.60 (d, J = 9.2 Hz, 2H), 4.05 (dd, J = 9.3, 4.3 Hz, 1H), 3.37 (dd, J = 18.7, 9.3 Hz, 1H), 2.87 (m, 2H), 2.72 (dd, J = 18.7, 4.6 Hz, 1H), 1.32 (t, J = 7.4 Hz, 3H); ^{13}C NMR (100 MHz, CDCl_3) δ = 174.8, 173.0, 147.2, 137.3, 127.0, 124.5, 38.9, 36.2, 26.4, 14.2. Anal. Calcd for $\text{C}_{12}\text{H}_{12}\text{N}_2\text{SO}_4$: C, 51.41; H, 4.32; N, 10.00; S, 11.44; O, 22.83. Found: C, 51.76; H, 4.26; N, 9.96; S, 11.81; O, 22.21.
16. Wikjord, B.; Byers, L. D. *J. Am. Chem. Soc.* **1992**, 114, 5553.
17. Wikjord, B.; Byers, L. D. *J. Org. Chem.* **1992**, 57, 6814.
18. Ahn, B.-T.; Park, H.-S.; Lee, E.-J.; Um, I.-H. *Bull. Korean Chem. Soc.* **2000**, 21, 905.
19. Sasaki, Y.; Lindqvist, I.; Sillen, L. G. *J. Inorg. Nucl. Chem.* **1959**, 9, 93.
20. Putative catalysts were dissolved in 0.50 M HEPES–NaOH buffer at pH 7.5 containing NaCl (0.10 M). Na_2SO_4 was added to maintain a constant ionic strength of $I = 1.6$. The catalyst solution (157 μL) was added to a cuvette, and the absorbance at 319 nm was adjusted to zero. Hydrolysis was initiated by adding maleimide **1** or succinimide **2** (3 μL of a 1.65 mM solution in acetonitrile) to the cuvette, and the absorbance at 319 nm was monitored with time. Kinetic traces were fitted to the equation: $(A_{319\text{nm}})_t = (A_{319\text{nm}})_{t=\infty}(1 - e^{-kt})$ to give the rate constant, k . The uncatalyzed rate constant for hydrolysis was subtracted from the catalyzed rate constant to yield the first-order rate constant, k_1 . The k_1 values were plotted versus catalyst concentration, and the data were fitted to the equation: $k_1 = k_2[\text{catalyst}]$, where k_2 is the second-order rate constant.
21. Succinimide **2** (382 μL of a 1.65 mM solution in acetonitrile) was added to a solution (20 mL) of 50 mM HEPES–NaOH buffer at pH 7.5 containing catalyst (0.10 M) and NaCl (0.10 M). The reaction mixture was stirred for 2 h and extracted with ethyl acetate (2×20 mL). The organic layer was concentrated under reduced pressure, and the residue was analyzed by C18 HPLC using a linear gradient of water (80–20% v/v) in acetonitrile containing TFA (0.1% v/v) over 50 min. Hydrolyzed succinimide **2** eluted in two peaks at 40 min; intact succinimide **2** eluted at 45 min. To compare molybdate and chromate as catalysts, reactions were performed on 90-mL scale, and 20-mL aliquots were removed at four time points and subjected to HPLC analysis.
22. Characterization data for hydrolyzed succinimide **2**: ^1H NMR (400 MHz, CD_3CN , 2 isomers) δ = 9.1 and 8.9 (s, 1H), 8.2 (m, 2H), 7.8 (m, 2H), 3.7 (m, 1H), 3.11–2.96 (m, 1H), 2.78–2.62 (m, 3H), 1.2 (m, 3H); ESI ($\text{M}+\text{Na}$) $^+$ Calcd for $\text{C}_{12}\text{H}_{14}\text{SN}_2\text{O}_5$, 321.06; found, 321.00.
23. Fu, G. C. *Acc. Chem. Res.* **2004**, 37, 542.
24. (a) Connett, P. H.; Wetterhahn, K. E. *J. Am. Chem. Soc.* **1985**, 107, 4282; (b) Levina, A.; Lay, P. A. *Inorg. Chem.* **2004**, 43, 324.