

# Knockout of the Ribonuclease Inhibitor Gene Leaves Human Cells Vulnerable to Secretory Ribonucleases

Sydney P. Thomas,<sup>†</sup> Eunji Kim,<sup>‡</sup> Jin-Soo Kim,<sup>‡</sup> and Ronald T. Raines<sup>\*,||,§</sup>

<sup>†</sup>Graduate Program in Cellular & Molecular Biology, University of Wisconsin—Madison, 1525 Linden Drive, Madison, Wisconsin 53706, United States

<sup>‡</sup>Center for Genome Engineering, Institute for Basic Science, Seoul 08826, Republic of Korea

<sup>||</sup>Department of Biochemistry, University of Wisconsin—Madison, 433 Babcock Drive, Madison, Wisconsin 53706, United States

<sup>§</sup>Department of Chemistry, University of Wisconsin—Madison, 1101 University Avenue, Madison, Wisconsin 53706, United States

## Supporting Information

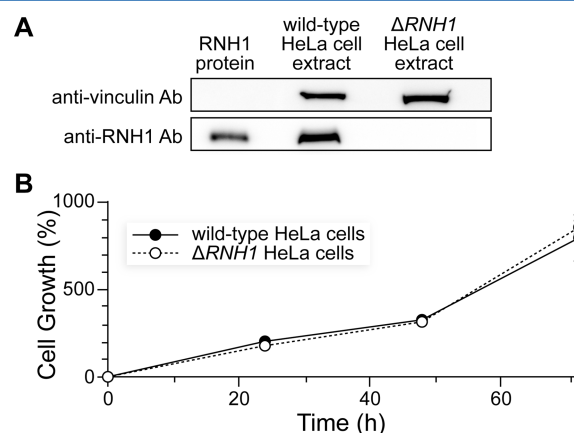
**ABSTRACT:** Ribonuclease inhibitor (RNH1) is a cytosolic protein that binds with femtomolar affinity to human ribonuclease 1 (RNase 1) and homologous secretory ribonucleases. RNH1 contains 32 cysteine residues and has been implicated as an antioxidant. Here, we use CRISPR-Cas9 to knock out *RNH1* in HeLa cells. We find that cellular RNH1 affords marked protection from the lethal ribonucleolytic activity of RNase 1 but not from oxidants. We conclude that RNH1 protects cytosolic RNA from invading ribonucleases.

Ribonuclease inhibitor (RNH1<sup>1,2</sup>) is a highly conserved cytosolic protein of micromolar abundance that binds to human ribonuclease 1 (RNase 1), bovine RNase A,<sup>3</sup> and other pancreatic-type ribonucleases<sup>4</sup> with femtomolar affinity.<sup>5,6</sup> Although many of the physical properties of RNH1 are well-understood, its biological function is subject to debate. Because of its high affinity for pancreatic-type ribonucleases, which are secretory enzymes, RNH1 has been called a cellular “sentry” that protects cytosolic RNA from degradation by endocytosed ribonucleases.<sup>7</sup> This hypothesis is supported by RNase 1 variants with decreased affinity for RNH1 being toxic to human cells, unlike wild-type RNase 1,<sup>6,8,9</sup> yet when RNAi has been used to diminish levels of RNH1,<sup>10–15</sup> the results have been used to advance the hypothesis that RNH1 acts as a cytosolic antioxidant.<sup>10,11,14</sup> As RNH1 contains 32 cysteine residues and its concentration in the cytosol is  $\sim 4 \mu\text{M}$ ,<sup>7</sup> RNH1 provides  $\sim 0.1 \text{ mM}$  thiol groups. For comparison, the intracellular concentration of reduced glutathione ranges from  $\sim 0.1$  to  $15 \text{ mM}$  depending on the subcellular compartment, cell type, and organism.<sup>16</sup>

Distinguishing between these two hypotheses with RNAi is difficult. By mediating gene expression at the level of transcription, RNAi suffers from incomplete and often transient knockdowns, as well as off-target effects.<sup>17</sup> The task with RNH1 is a special challenge. As RNH1 binds to RNase 1 with extraordinary affinity and the entry of RNase 1 into the cytosol is inefficient,<sup>18–20</sup> even a low level of RNH1 could protect a cell.<sup>1</sup> In contrast to RNAi, methods that employ CRISPR-Cas9 act at the genomic level.<sup>21–24</sup> Differences in phenotypes arising from knockdowns by RNAi and knockouts by CRISPR-Cas9

have been reported, as have identical RNAi-mediated knockdowns in different genetic backgrounds.<sup>25–27</sup> Here, we report on a CRISPR-Cas9 knockout of *RNH1* in a human cell, allowing for an unambiguous assessment of its biological role.

We created a CRISPR-edited knockout of *RNH1* in HeLa cells.<sup>28</sup> The most successful knockout clone ( $\Delta\text{RNH1}$ ) contained a five-nucleotide deletion in exon 2.  $\Delta\text{RNH1}$  cells exhibited no detectable production of RNH1 protein (Figure 1A), but proliferated at a rate indistinguishable from that of



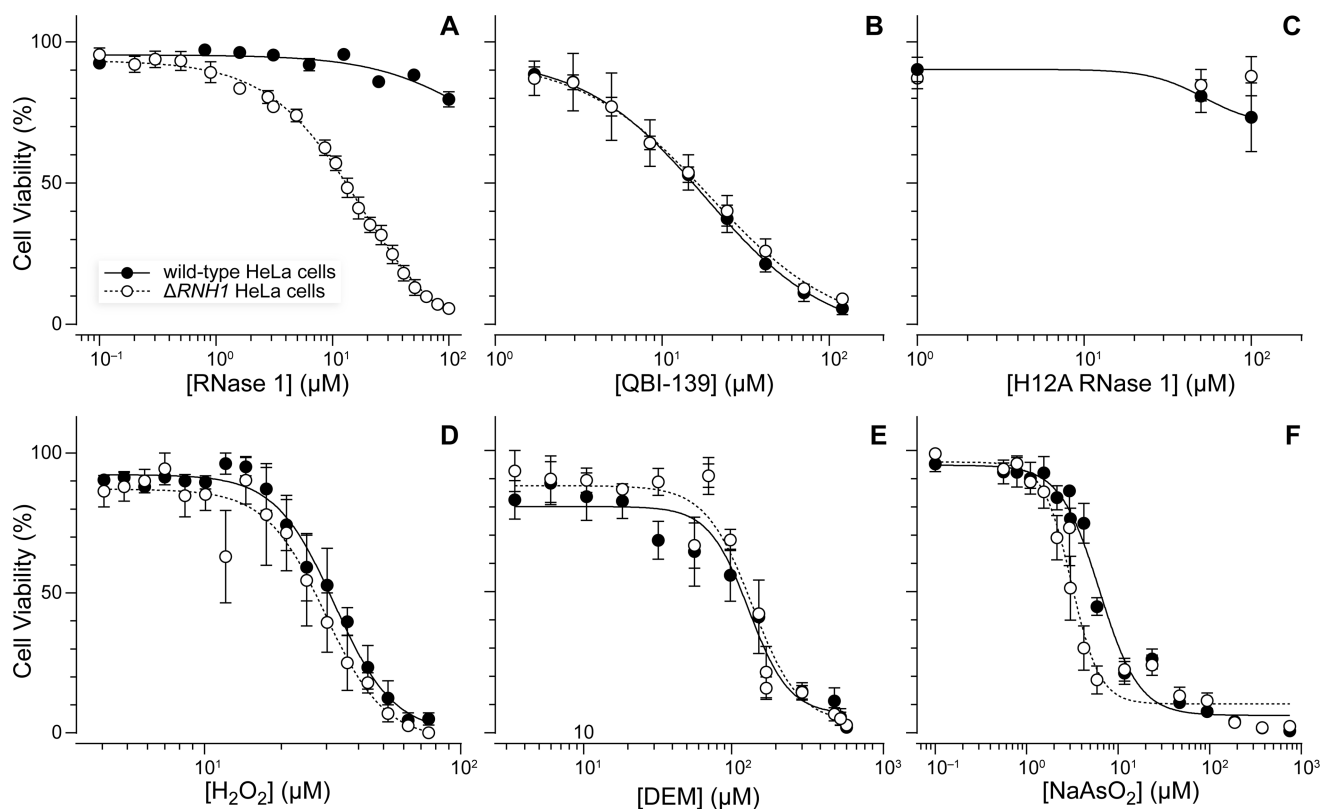
**Figure 1.** Characterization of *RNH1*-knockout HeLa cells. (A) Immunoblot of an extract from wild-type and  $\Delta\text{RNH1}$  cells. (B) Proliferation of wild-type and  $\Delta\text{RNH1}$  cells in serum-free Dulbecco's modified Eagle's medium containing a penicillin/streptomycin solution [1% (v/v)] at  $37^\circ\text{C}$ .

wild-type HeLa cells (Figure 1B). These coinciding cell growth curves from wild-type and knockout cells conflict with results from RNAi-mediated knockdown experiments.<sup>13,14</sup> This concurrence indicates that any leakage of nascent RNase 1 from the secretory pathway of an  $\Delta\text{RNH1}$  cell into its cytosol is inconsequential. Lastly, the growth medium from each cell line contained an equivalent (small) amount of ribonucleolytic

Received: October 2, 2016

Revised: November 1, 2016

Published: November 2, 2016



**Figure 2.** Effect of (A) human RNase 1, (B and C) its variants, and (D–F) oxidizing agents on the viability of wild-type and *RNH1*-knockout HeLa cells. Cell viability was measured with a tetrazolium dye-based assay for metabolic activity.  $EC_{50}$  values are listed in Table 1.

activity (Figure S1), suggesting that the production of RNase 1 is not linked to that of RNH1.

RNH1 protects HeLa cells from RNase 1. *RNH1*-knockout cells were much more vulnerable to wild-type RNase 1 than were wild-type cells (Figure 2A). Indeed, no deleterious consequences on wild-type cells were apparent with RNase 1 at 17  $\mu$ M, which is the  $EC_{50}$  value for *RNH1*-knockout cells. In contrast, *RNH1*-knockout cells and wild-type cells were equally vulnerable to QBI-139 (Figure 2B), which is an RNase 1 variant that has been engineered to evade RI and is in clinical trials as a cancer chemotherapeutic agent.<sup>29,30</sup> Finally, neither *RNH1*-knockout cells nor wild-type cells are vulnerable to H12A RNase 1 (Figure 2C), which is a variant having a substitution in a key active-site residue and thus low catalytic activity.<sup>31,32</sup> These cell viability data (Table 1) provide strong support for the hypothesis that RNH1 modulates the toxicity of RNase 1 by inhibiting its ribonucleolytic activity.

RNH1 affords little protection from oxidative stress. HeLa cells were subjected to three well-known inducers of oxidative stress: hydrogen peroxide ( $H_2O_2$ ), diethyl maleate (DEM), and sodium arsenite ( $NaAsO_2$ ). *RNH1*-knockout cells and wild-type cells were equally vulnerable to  $H_2O_2$  and DEM (Figure 2D,E). *RNH1*-knockout cells appeared to be slightly more vulnerable to  $NaAsO_2$  than were wild-type cells (Figure 2F), but the corresponding ratio of  $EC_{50}$  values was equal to only 2 (Table 1). Thus, the marked protection afforded by RNH1 to the potential toxicity of RNase 1 was not replicated with inducers of oxidative stress.

RNase 1 exists in all bodily fluids. Endothelial cells have been shown to secrete up to 100 ng of RNase 1 per  $10^6$  cells on a daily basis.<sup>33–35</sup> This enzyme can re-enter endothelial cells by endocytosis, suggesting that the cytosol is assaulted constantly

**Table 1.** Effect of Human RNase 1, Its Variants, and Oxidizing Agents on the Viability of Wild-Type and *RNH1*-Knockout HeLa Cells<sup>a</sup>

reagent	wild-type HeLa cells	$\Delta$ <i>RNH1</i> HeLa cells
RNase 1	>100 <sup>b</sup>	17 $\pm$ 2
QBI-139	18 $\pm$ 2	19 $\pm$ 6
H12A RNase 1	>100 <sup>b</sup>	>100 <sup>b</sup>
$H_2O_2$	32 $\pm$ 6	30 $\pm$ 2
DEM	130 $\pm$ 17	140 $\pm$ 13
$NaAsO_2$	6.2 $\pm$ 0.5	3.1 $\pm$ 0.2

<sup>a</sup>Data are values ( $\pm$ standard error) of  $EC_{50}$  (micromolar) for cell viability as measured with a tetrazolium dye-based assay for metabolic activity. <sup>b</sup>Protein concentrations of >100  $\mu$ M resulted in >75% cell viability.

by a potent catalyst of RNA degradation.<sup>32,36–38</sup> By binding and inactivating RNase 1,<sup>6</sup> RNH1 can protect cytosolic RNA from degradation and promote cell survival.

The observed  $EC_{50}$  value for RNase 1 (17  $\mu$ M) is much greater than the concentration of RNase 1 in human serum (480 ng/mL = 33 nM).<sup>39</sup> HeLa cells are, however, nearly  $10^2$ -fold less vulnerable to ribonucleases than are other cell lines.<sup>12,40</sup> Moreover, even modest cytotoxicity could be intolerable in a physiological context.

Although the 32 cysteine residues of RNH1 contribute little to cellular oxidation resistance, they might have evolved for another purpose. RNH1 is sensitive to oxidation, and oxidized RNH1 is incapable of binding to a ribonuclease.<sup>41–43</sup> This sensitivity extends to RNH1-ribonuclease complexes, which release active enzyme upon oxidation.<sup>2,44</sup> All vertebrates have intracellular RNH1. The human protein is, however, more

sensitive to oxidation than is that of other mammals, a bird, or a lizard.<sup>2</sup> Together, these data suggest that human RNH1 might have evolved to be a highly sensitive trigger for unleashing lethal ribonucleolytic activity in response to oxidative stress, which would otherwise inflict heritable genomic damage.

The clinical efficacy of an RNase 1 variant, QBI-139, relies on its ability to evade RNH1.<sup>29,30</sup> The viability of HeLa cells is affected by QBI-139 regardless of the presence of RNH1 (Figure 2B and Table 1). Moreover, the viability of HeLa cells that lack RNH1 is affected equivalently by QBI-139 and wild-type RNase 1. These data suggest that QBI-139 is an optimized cytotoxin. Still, enhancing cellular uptake and endosomal escape could render QBI-139 even more effective.<sup>9,18</sup> The RNH1-knockout cells described herein provide a powerful means of exploring such approaches without confounding effects from inactivation by RNH1. Experiments along these lines are ongoing in our laboratory.

## ■ ASSOCIATED CONTENT

### 📄 Supporting Information

The Supporting Information is available free of charge on the ACS Publications website at DOI: 10.1021/acs.biochem.6b01003.

Additional observations (PDF)

## ■ AUTHOR INFORMATION

### Corresponding Author

\*E-mail: rtraines@wisc.edu.

### Author Contributions

S.P.T. and R.T.R. designed the experiments. E.K. and J.-S.K. generated RNH1-knockout HeLa cells. S.P.T. performed immunoblots, proliferation, and cytotoxicity assays. S.P.T. and R.T.R. wrote the manuscript.

### Funding

This work was supported by Grant R01 CA073808 (National Institutes of Health) to R.T.R. and Grant IBS-R021-D1 (IBS) to J.-S.K.

### Notes

The authors declare the following competing financial interest(s): R.T.R. is a founder of Quintessence Biosciences, Inc. (Madison, WI), which is developing cancer chemotherapeutic agents based on ribonucleases.

## ■ ACKNOWLEDGMENTS

We are grateful to Dr. T. T. Hoang (University of Wisconsin—Madison) for RNH1 and contributive discussions and to Dr. L. E. Strong (Quintessence Biosciences, Inc.) for QBI-139.

## ■ REFERENCES

- (1) Dickson, K. A., Haigis, M. C., and Raines, R. T. (2005) Ribonuclease inhibitor: Structure and function. *Prog. Nucleic Acid Res. Mol. Biol.* 80, 349–374.
- (2) Lomax, J. E., Bianchetti, C. M., Chang, A., Phillips, G. N., Jr., Fox, B. G., and Raines, R. T. (2014) Functional evolution of ribonuclease inhibitor: Insights from birds and reptiles. *J. Mol. Biol.* 426, 3041–3056.
- (3) Raines, R. T. (1998) Ribonuclease A. *Chem. Rev.* 98, 1045–1065.
- (4) Sorrentino, S. (2010) The eight human “canonical” ribonucleases: Molecular diversity, catalytic properties, and special biological actions of the enzyme proteins. *FEBS Lett.* 584, 2194–2200.

- (5) Lee, F. S., Shapiro, R., and Vallee, B. L. (1989) Tight-binding inhibition of angiogenin and ribonuclease A by placental ribonuclease inhibitor. *Biochemistry* 28, 225–230.

- (6) Johnson, R. J., McCoy, J. G., Bingman, C. A., Phillips, G. N., Jr., and Raines, R. T. (2007) Inhibition of human pancreatic ribonuclease by the human ribonuclease inhibitor protein. *J. Mol. Biol.* 368, 434–449.

- (7) Haigis, M. C., Kurten, E. L., and Raines, R. T. (2003) Ribonuclease inhibitor as an intracellular sentry. *Nucleic Acids Res.* 31, 1024–1032.

- (8) Leland, P. A., Staniszewski, K. E., Kim, B.-M., and Raines, R. T. (2001) Endowing human pancreatic ribonuclease with toxicity for cancer cells. *J. Biol. Chem.* 276, 43095–43102.

- (9) Rutkoski, T. J., and Raines, R. T. (2008) Evasion of ribonuclease inhibitor as a determinant of ribonuclease cytotoxicity. *Curr. Pharm. Biotechnol.* 9, 185–189.

- (10) Monti, D. M., and D'Alessio, G. (2004) Cytosolic RNase inhibitor only affects RNases with intrinsic cytotoxicity. *J. Biol. Chem.* 279, 39195–39198.

- (11) Monti, D. M., Montesano Gesualdi, N., Matoušek, J., Esposito, F., and D'Alessio, G. (2007) The cytosolic ribonuclease inhibitor contributes to intracellular redox homeostasis. *FEBS Lett.* 581, 930–934.

- (12) Dickson, K. A., and Raines, R. T. (2009) Silencing an inhibitor unleashes a cytotoxic enzyme. *Biochemistry* 48, 5051–5053.

- (13) Chen, J., Ou-Yang, X., Gao, J., Zhu, J., He, X., and Rong, J. (2011) Knockdown of ribonuclease inhibitor expression with siRNA in non-invasive bladder cancer cell line BIU-87 promotes growth and metastasis potentials. *Mol. Cell. Biochem.* 349, 83–95.

- (14) Pizzo, E., Sarcinelli, C., Sheng, J., Fusco, S., Formiggini, F., Netti, P., Yu, W., D'Alessio, G., and Hu, G.-f. (2013) Ribonuclease/angiogenin inhibitor 1 regulates stress-induced subcellular localization of angiogenin to control growth and survival. *J. Cell Sci.* 126, 4308–4319.

- (15) Zhu, Y., Das, K., Wu, J., Lee, M. H., and Tan, P. (2014) RNH1 regulation of reactive oxygen species contributes to histone deacetylase inhibitor resistance in gastric cancer cells. *Oncogene* 33, 1527–1537.

- (16) Deponte, M. (2013) Glutathione catalysis and the reaction mechanisms of glutathione-dependent enzymes. *Biochim. Biophys. Acta, Gen. Subj.* 1830, 3217–3266.

- (17) Deng, Y., Wang, C. C., Choy, K. W., Du, Q., Chen, J., Wang, Q., Li, L., Chung, T. K. H., and Tang, T. (2014) Therapeutic potentials of gene silencing by RNA interference: Principles, challenges, and new strategies. *Gene* 538, 217–227.

- (18) Lomax, J. E., Eller, C. H., and Raines, R. T. (2012) Rational design and evaluation of mammalian ribonuclease cytotoxins. *Methods Enzymol.* 502, 273–290.

- (19) Chao, T.-Y., and Raines, R. T. (2013) Fluorogenic label to quantify the cytosolic delivery of macromolecules. *Mol. Biosyst.* 9, 339–342.

- (20) Sundlass, N. K., Eller, C. H., Cui, Q., and Raines, R. T. (2013) Contribution of electrostatics to the binding of pancreatic-type ribonucleases to membranes. *Biochemistry* 52, 6304–6312.

- (21) Jinek, M., Chylinski, K., Fonfara, I., Hauer, M., Doudna, J. A., and Charpentier, E. (2012) A programmable dual-RNA-guided DNA endonuclease in adaptive bacterial immunity. *Science* 337, 816–821.

- (22) Cho, S. W., Kim, S., Kim, J. M., and Kim, J.-S. (2013) Targeted genome engineering in human cells with the Cas9 RNA-guided endonuclease. *Nat. Biotechnol.* 31, 230–232.

- (23) Cong, L., Ran, F. A., Cox, D., Lin, S., Barretto, R., Habib, N., Hsu, P. D., Wu, X., Jiang, W., Marraffini, L. A., and Zhang, F. (2013) Multiplex genome engineering using CRISPR/Cas systems. *Science* 339, 819–823.

- (24) Kim, J.-S. (2016) Genome editing comes of age. *Nat. Protoc.* 11, 1573–1578.

- (25) Karakas, B., Weeraratna, A. T., Abukhdeir, A. M., Konishi, H., Gustin, J. P., Vitolo, M. L., Bachman, K. E., and Park, B. H. (2007) p21 gene knock down does not identify genetic effectors seen with gene knock out. *Cancer Biol. Ther.* 6, 1025–1030.

(26) Kitzmann, P., Schwirz, J., Schmitt-Engel, C., and Bucher, G. (2013) RNAi phenotypes are influenced by the genetic background of the injected strain. *BMC Genomics* 14, 5.

(27) Kok, F. O., Shin, M., Ni, C. W., Gupta, A., Grosse, A. S., van Impel, A., Kirchmaier, B. C., Peterson-Maduro, J., Kourkoulis, G., Male, I., DeSantis, D. F., Sheppard-Tindell, S., Ebarasi, L., Betsholtz, C., Schulte-Merker, S., Wolfe, S. A., and Lawson, N. D. (2015) Reverse genetic screening reveals poor correlation between morpholino-induced and mutant phenotypes in zebrafish. *Dev. Cell* 32, 97–108.

(28) We are aware that HeLa cells are prone to genomic instability: Frattini, A., Fabbri, M., Valli, R., De Paoli, E., Montalbano, G., Gribaldo, L., Pasquali, F., and Maserati, E. (2015) High variability of genomic instability and gene expression profiling in different HeLa clones. *Sci. Rep.* 5, 15377. That instability is unlikely to affect the experiments described herein.

(29) Strong, L. E., Kink, J. A., Pensinger, D., Mei, B., Shahan, M., and Raines, R. T. (2012) Efficacy of ribonuclease QBI-139 in combination with standard of care therapies. *Cancer Res.* 72 (Suppl. 1), 1838.

(30) Strong, L. E., Kink, J. A., Mei, B., Shahan, M. N., and Raines, R. T. (2012) First in human phase I clinical trial of QBI-139, a human ribonuclease variant, in solid tumors. *J. Clin. Oncol.* No. Suppl., 30.

(31) Thompson, J. E., and Raines, R. T. (1994) Value of general acid–base catalysis to ribonuclease A. *J. Am. Chem. Soc.* 116, 5467–5468.

(32) Eller, C. H., Lomax, J. E., and Raines, R. T. (2014) Bovine brain ribonuclease is the functional homolog of human ribonuclease 1. *J. Biol. Chem.* 289, 25996–26006.

(33) Landre, J. B., Hewett, P. W., Olivot, J. M., Friedl, P., Ko, Y., Sachinidis, A., and Moenner, M. (2002) Human endothelial cells selectively express large amounts of pancreatic-type ribonuclease (RNase 1). *J. Cell. Biochem.* 86, 540–552.

(34) Barrabés, S., Pagès-Pons, L., Radcliffe, C. M., Tabarés, G., Fort, E., Royle, L., Harvey, D. J., Moenner, M., Dwek, R. A., Rudd, P. M., De Llorens, R., and Peracaula, R. (2007) Glycosylation of serum ribonuclease 1 indicates a major endothelial origin and reveals an increase in core fucosylation in pancreatic cancer. *Glycobiology* 17, 388–400.

(35) Fischer, S., Nishio, M., Dadkhahi, S., Gansler, J., Saffarzadeh, M., Shibamiyama, A., Kral, N., Baal, N., Koyama, T., Deindl, E., and Preissner, K. T. (2011) Expression and localisation of vascular ribonucleases in endothelial cells. *Thromb. Haemostasis* 105, 345–355.

(36) Haigis, M. C., and Raines, R. T. (2003) Secretory ribonucleases are internalized by a dynamin-independent endocytic pathway. *J. Cell Sci.* 116, 313–324.

(37) Chao, T.-Y., Lavis, L. D., and Raines, R. T. (2010) Cellular uptake of ribonuclease A relies on anionic glycans. *Biochemistry* 49, 10666–10673.

(38) Chao, T.-Y., and Raines, R. T. (2011) Mechanism of ribonuclease A endocytosis: Analogies to cell-penetrating peptides. *Biochemistry* 50, 8374–8382.

(39) Kurihara, M., Ogawa, M., Ohta, T., Kurokawa, E., Kitahara, T., Kosaki, G., Watanabe, T., and Wada, H. (1982) Purification and immunological characterization of human pancreatic ribonuclease. *Cancer Res.* 42, 4836–4841.

(40) Rutkoski, T. J., Kurten, E. L., Mitchell, J. C., and Raines, R. T. (2005) Disruption of shape-complementarity markers to create cytotoxic variants of ribonuclease A. *J. Mol. Biol.* 354, 41–54.

(41) Fominaya, J. M., and Hofsteenge, J. (1992) Inactivation of ribonuclease inhibitor by thiol–disulfide exchange. *J. Biol. Chem.* 267, 24655–24660.

(42) Blázquez, M., Fominaya, J. M., and Hofsteenge, J. (1996) Oxidation of sulfhydryl groups of ribonuclease inhibitor in epithelial cells is sufficient for its intracellular degradation. *J. Biol. Chem.* 271, 18638–18642.

(43) Kim, B.-M., Schultz, L. W., and Raines, R. T. (1999) Variants of ribonuclease inhibitor that resist oxidation. *Protein Sci.* 8, 430–434.

(44) Ferreras, M., Gavilanes, J. G., López-Otín, C., and García-Segura, J. M. (1995) Thiol–disulfide exchange of ribonuclease inhibitor bound to ribonuclease A. *J. Biol. Chem.* 270, 28570–28578.