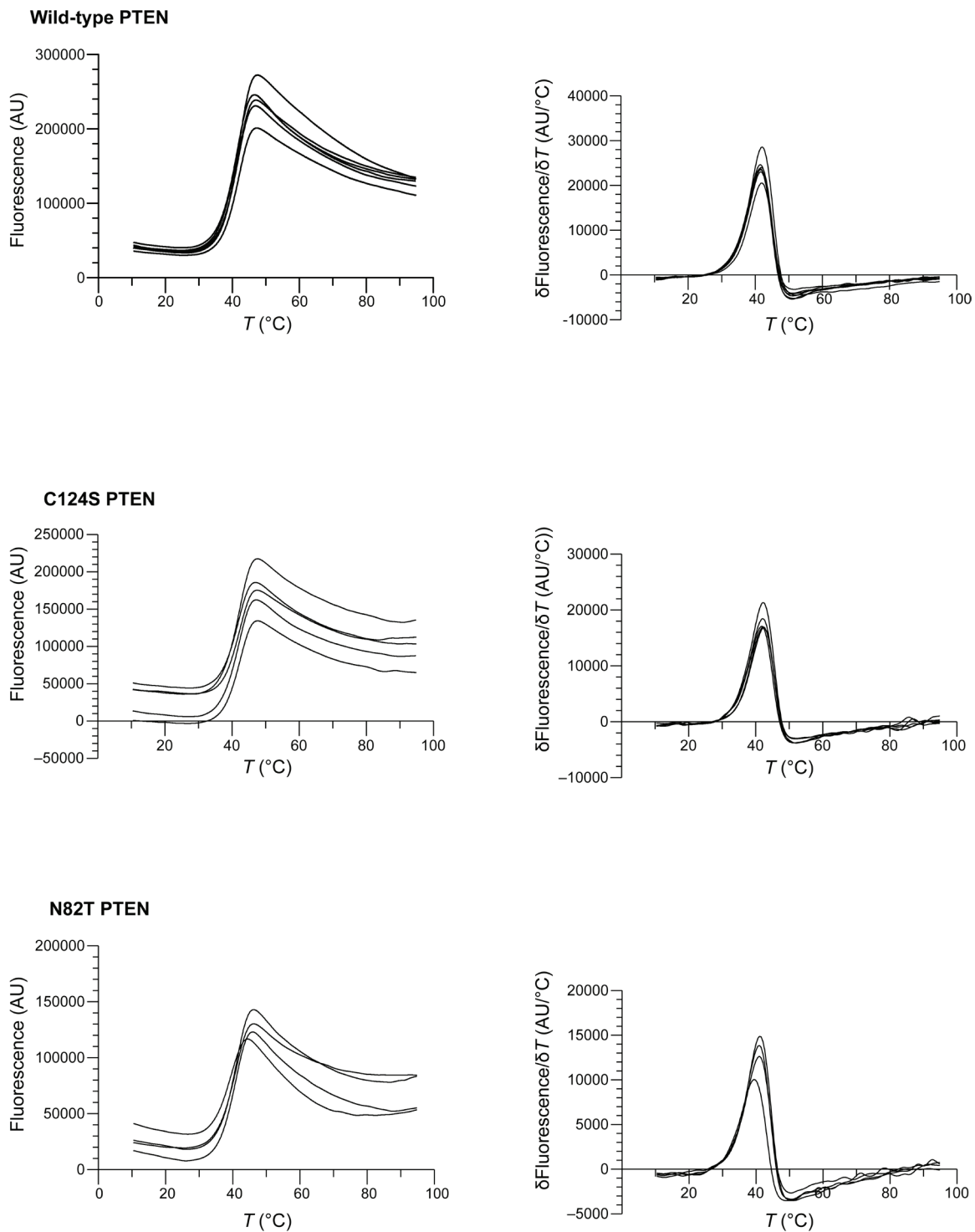
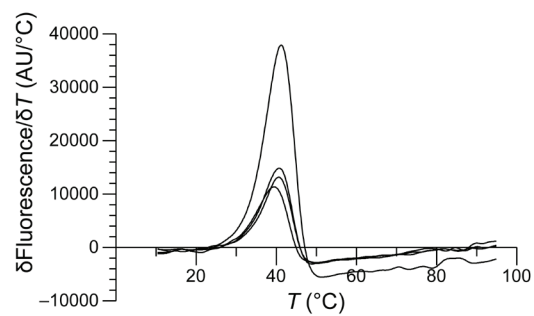
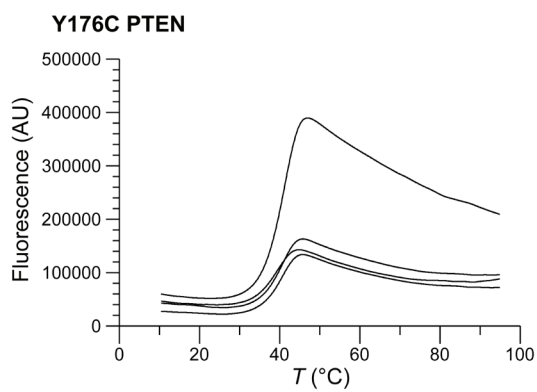
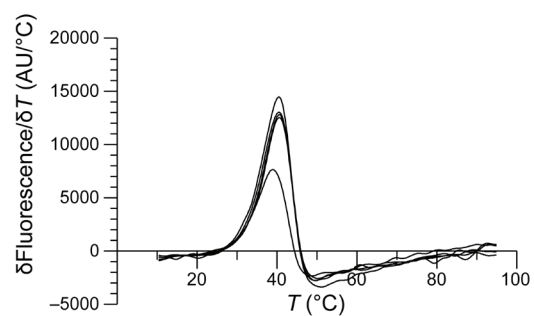
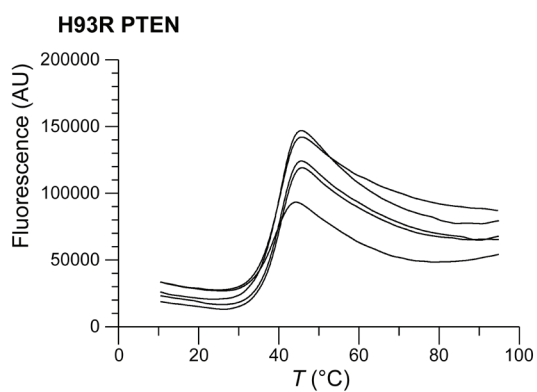
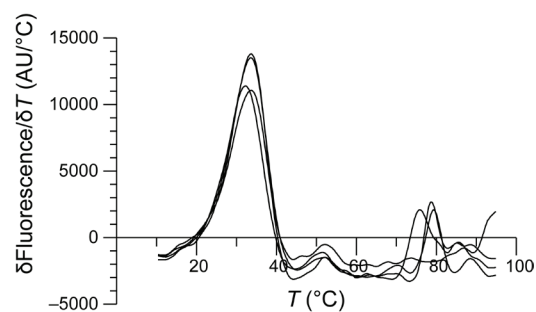
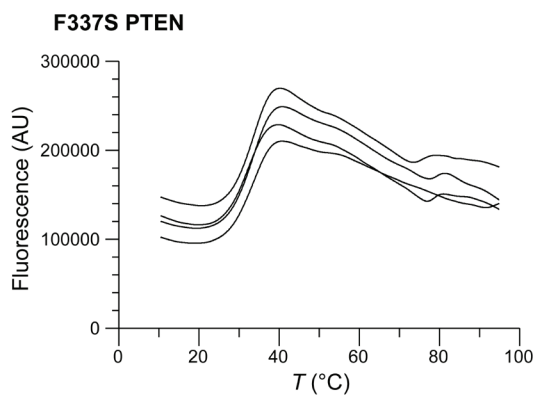
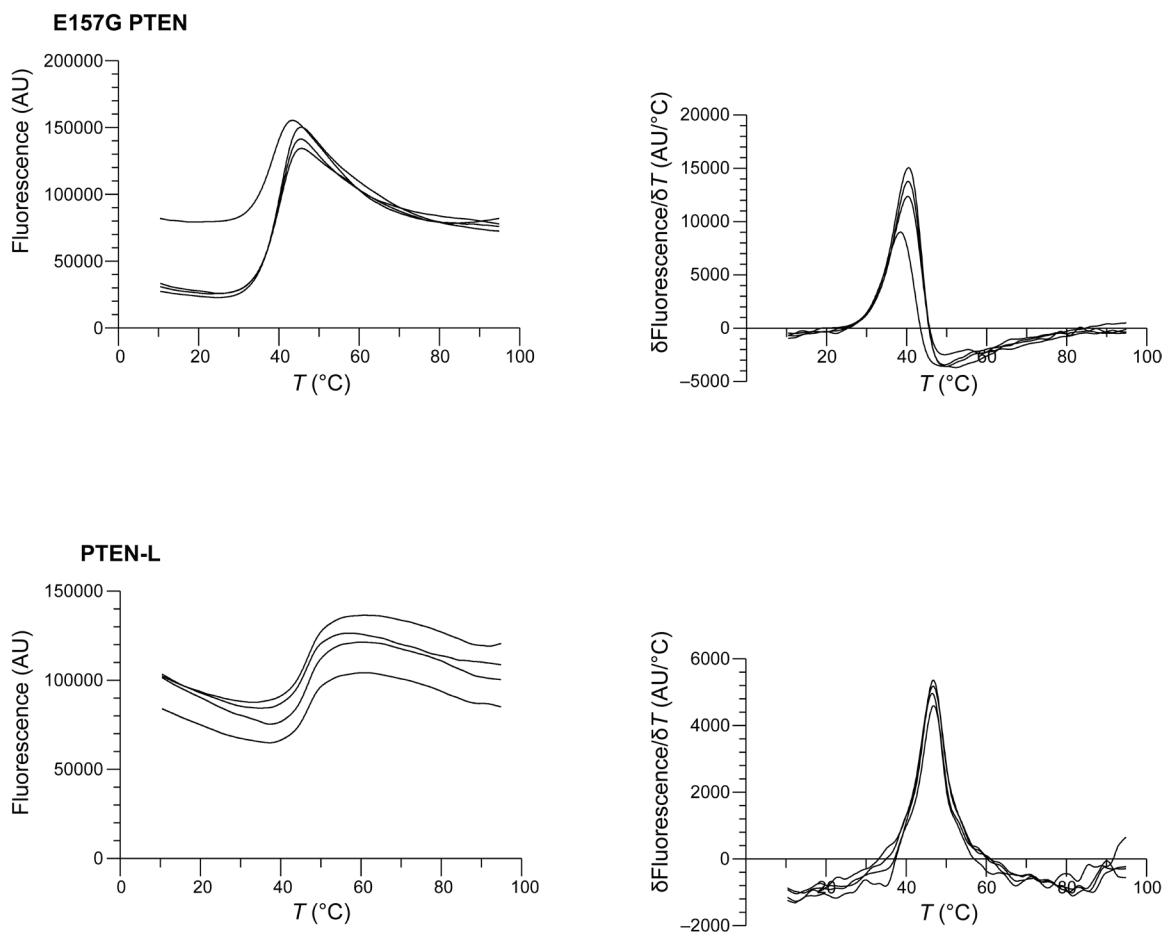


# Conformational Stability and Catalytic Activity of PTEN Variants Linked to Cancers and Autism Spectrum Disorders

Sean B. Johnston and Ronald T. Raines\*







**Figure S1.** Raw data for differential scanning fluorimetry experiments of human PTEN and its variants in 100 mM HEPES–NaOH buffer, pH 7.4, containing NaCl (100 mM), DTBA (10 mM), and SYPRO<sup>®</sup> Orange Protein Gel Stain (15 $\times$ ). Samples were heated at 1.0 °C per min.