

## Role for Cell-Surface Collagen of *Streptococcus pyogenes* in Infections

Aubrey J. Ellison,<sup>†</sup> Felix Dempwolff,<sup>‡</sup> Daniel B. Kearns,<sup>‡</sup> and Ronald T. Raines<sup>\*,†,§,||</sup>

<sup>†</sup>Department of Chemistry and <sup>§</sup>Department of Biochemistry, University of Wisconsin–Madison, Madison, Wisconsin 53706, United States

<sup>‡</sup>Department of Biology, Indiana University, Bloomington, Indiana 47405, United States

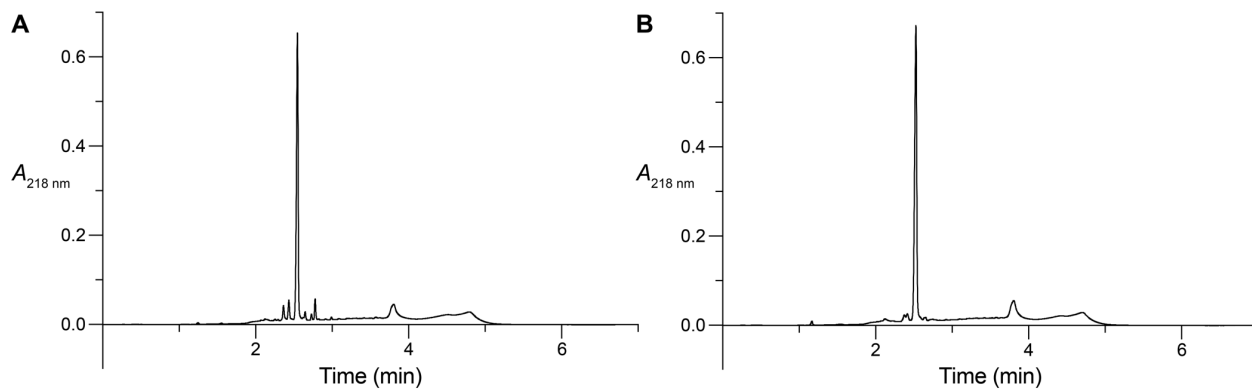
<sup>||</sup>Department of Chemistry, Massachusetts Institute of Technology, Cambridge, Massachusetts 02139, United States

\*rtraines@mit.edu

Contents	Page
Table of Contents	S1
Table S1. qPCR Primer Sequences	S2
Figure S1. C18 UPLC traces of Red-LCMP and Red-DCMP	S2

**Table S1. qPCR Primer Sequences**

Gene	Sequence (5'→3')
<i>Scl1</i>	Forward: CTAACCAAACGCCAGAACGC
	Reverse: GTTGGCTTGCTCACCAGTTG
<i>Scl2</i>	Forward: CAAAAGACGTGACACCTGCTC
	Reverse: CTGCCGGTGTTTTTGCAG
<i>RspJ</i>	Forward: TCGTGCGGTGCACAAATACA
	Reverse: CAGTTTGTGGTGTGGGTTCA
<i>RspE</i>	Forward: TTCGCAGCTCTTGTCTGTTGT
	Reverse: CAGCCTTACGGATCGCTTCT
<i>yoxA</i>	Forward: TTCCGGCAGAAAGCTCGTTA
	Reverse: ACGGGACATCCATCAGCTTC

**Figure S1. C18 UPLC traces of Red-LCMP (A) and Red-DCMP (B).**